

New Zealand International
Exhibition

Second Edition.

15 Views



Souvenir



Published by
SARGOOD, SON & EWEN.

Christchurch,

1906 = 7.

SMITH & ANTHONY, LTD.,
PRINTERS AND ENGRAVERS.



[Webb, Photo.]

Main Front View.



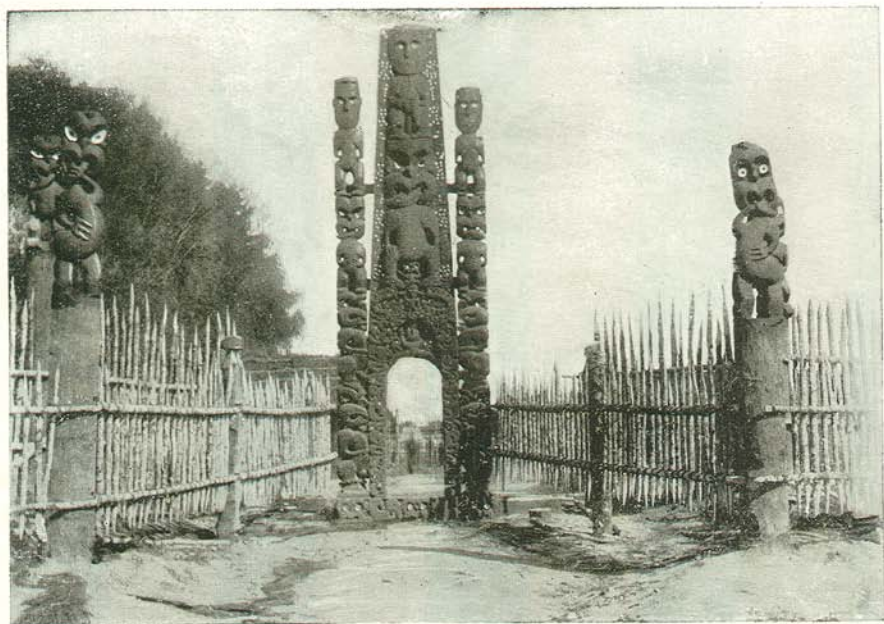
[Webb, Photo.]

The Main Entrance.



[Dutch, Photo.]

The Fernery.



The Gateway, Maori Pah.



[Beken, Photo]

Rotorua at the Exhibition.



SUSANMAH surprised by the Elders

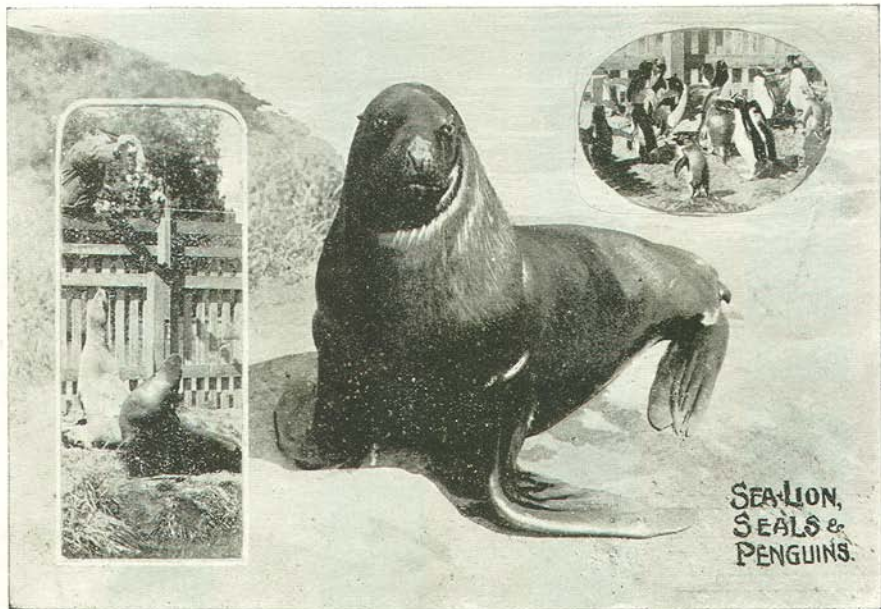
ZEPHYR & CUPID

BACCHANTÉ AND THE INFANT BACCHUS

[Webb, Photo.]

Statuary at the N.Z. International Exhibition.

London, 1883



SEA-LION,
SEALS &
PENGUINS.

[Webb, Photo.]

Antarctic Life at the Exhibition.



[Dutch, Photo.]

Wonderland.



[Dutch, Photo].

The Helter Skelter.



[Beken, Photo.]

The Toboggan.



[Webb, Photo.]

The Water Chute.



[Webb Photo.]

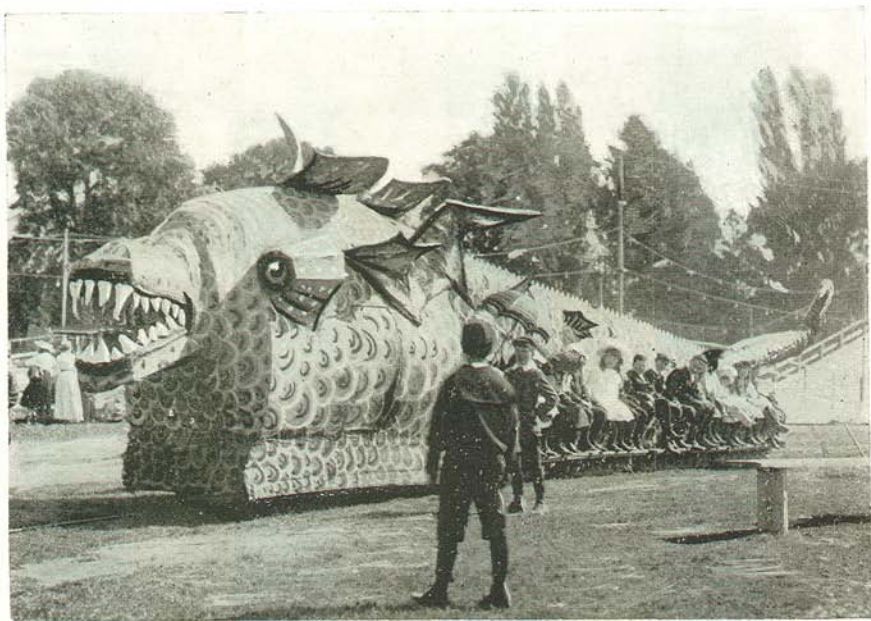
The Camels.

412033



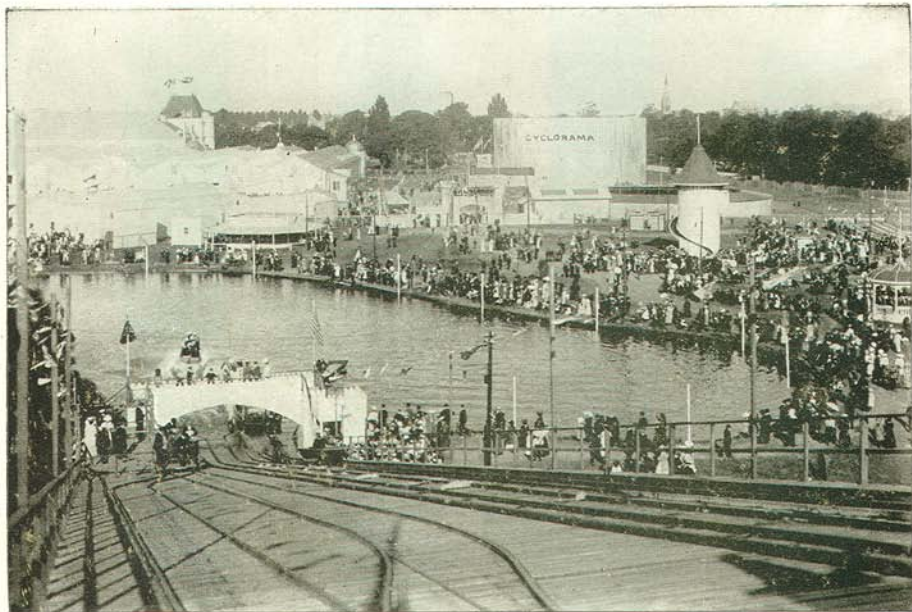
[Dutch, Photo.

Katzenjammer Castle.



[Webb, Photo].

The Dragon.



[Dutch, Photo.]

Wonderland from the Water Chute.

CANTERBURY PUBLIC LIBRARY



C80543907